

| %GFP    | 4weeks after BMT |
|---------|------------------|
| GS-     | 87.40±1.12       |
| GS+     | 88.47±1.65       |
| control | 89.80±2.64       |

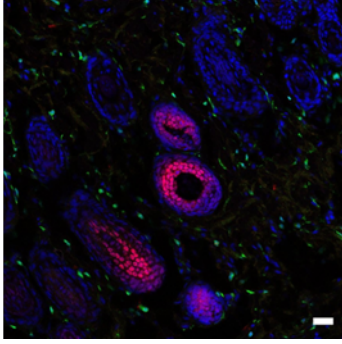
**Supplementary Table. 1.** Chimaerism analyses of rats after bone marrow transplantation (BMT). Bone marrow transplantation completely replaced for peripheral blood cell from donor origin at 4 weeks after BMT. The average values indicate  $\pm$  SE. There is no significant difference between GS-/+ and control group. n=4 for each. The experiments were repeated twice.

|        | dermis   |     |           |     |          |     | periosteum |     |            |     |
|--------|----------|-----|-----------|-----|----------|-----|------------|-----|------------|-----|
|        | GFP+SMA+ |     | GFP+CD31+ |     | GFP+NG2+ |     | GFP+CD105+ |     | GFP+CD106+ |     |
|        | GS-      | GS+ | GS-       | GS+ | GS-      | GS+ | GS-        | GS+ | GS-        | GS+ |
| 2 w pw | -        | -   | -         | ±   | -        | -   | -          | -   | -          | -   |
| 4 w pw | -        | ++  | -         | ±   | -        | +   | -          | ++  | -          | ++  |
| 6 w pw | ±        | ++  | ±         | ±   | ±        | +   | ±          | ±   | ±          | ±   |

**Supplementary Table. 2.**

Quantitative analyses of BMDCs contribution to regenerated vessels or periosteum in GS (-) or GS (+) rats. The numbers of SMA-, CD31-, NG2-, CD105- or CD-106 positive cells with GFP-positivity were counted in five fields of view in the dermis (200 µm x 200 µm) or the periosteum (200 µm x 171.9 µm to 18.34 µm, depending on the thickness of the periosteum) per GS (-) or GS (+) rats, respectively. Each symbol indicates the following: -, 0 to 5 in each field; ±, 5 to 15 in each field; +, > 15 in each field. n=4 for each. The experiments were repeated twice.

DAPI / GFP / LEF1



**Supplementary Fig. 1.** Hair follicles in no wounded areas express LEF1. Scale bars, 30  $\mu\text{m}$