



SUMS

2013 PROFILE

SHIGA UNIVERSITY OF MEDICAL SCIENCE

*A globally competitive university
trusted by the community*



University President
Tadao Bamba

● PHILOSOPHY

Shiga University of Medical Science strives to serve the health and social welfare of the community by cultivating trustworthy medical professionals with the best possible training, and by promoting advanced research in medicine and nursing.

● OBJECTIVES

The principles of Shiga University of Medical Science are based on Japan's Fundamental Law of Education, the School Education Law and the National University Corporation Law. We provide students with a broad education in the liberal arts along with highly advanced professional skills in the fields of medicine and nursing. Our goal is to encourage a faithful sense of medical ethics and a spirit of scientific inquiry. This is to contribute to the development of medicine and nursing, and to the welfare of the community.

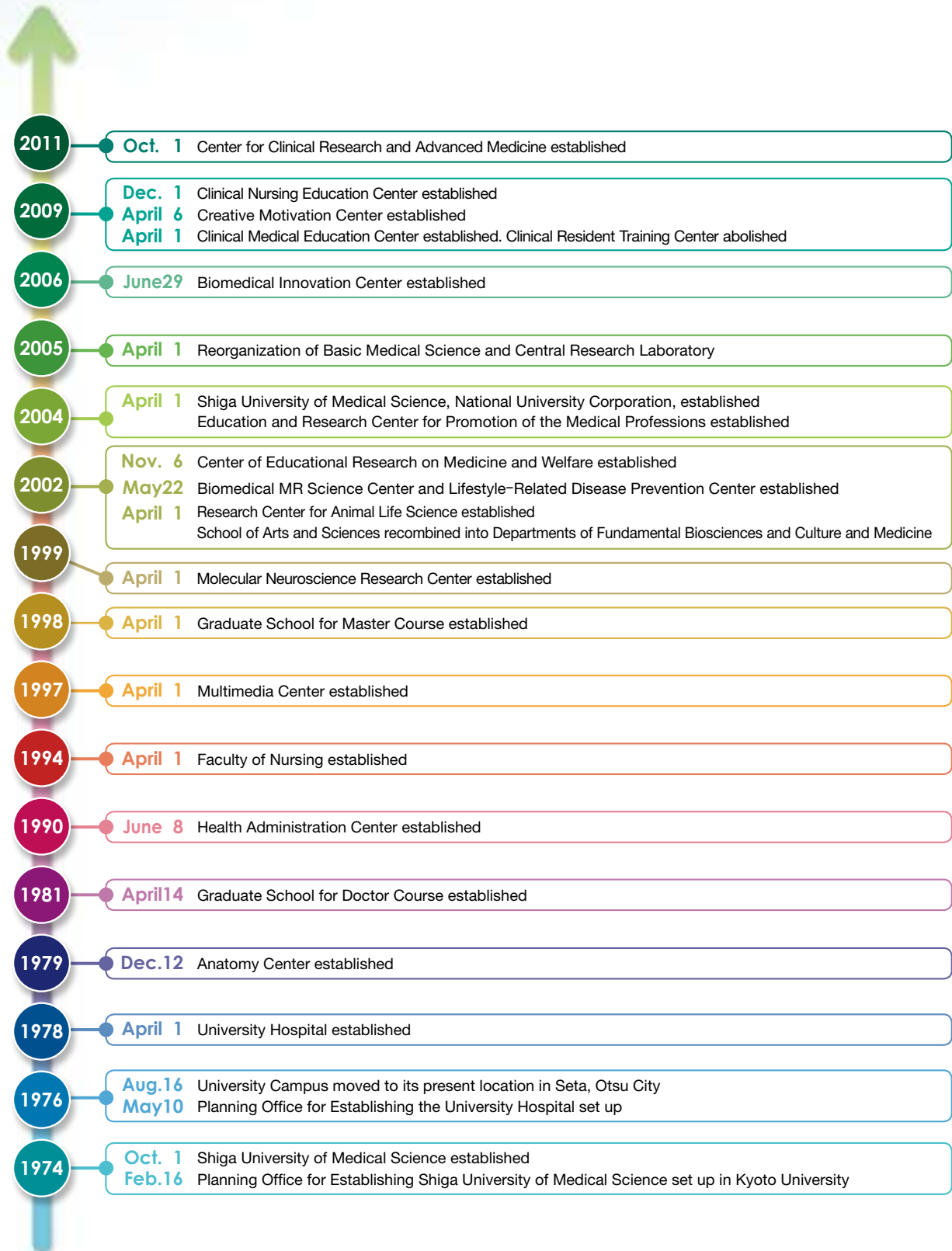
(The 1st article of the regulations of Shiga University of Medical Science)

● CONTENTS

HISTORY	3
ACADEMIC CALENDAR	4
MEMBERS OF THE BOARD	5
ORGANIZATION CHART	6
DEPARTMENTS	7
ADMINISTRATIVE AND ACADEMIC STAFF	9
OUTLINE OF ACTIVITIES	11
NUMBER OF STUDENTS	12
INTERNATIONAL ACADEMIC EXCHANGES	13
UNIVERSITY LIBRARY	15
UNIVERSITY HOSPITAL	16
HOSPITAL RENEWAL	17
UNIVERSITY HOSPITAL ORGANIZATION CHART	19
DIAGNOSIS AND TREATMENT	20
SITE MAP OF FACILITIES	21
AREA MAP AND ACCESS	22



HISTORY



ACADEMIC CALENDAR

2012

March~April Spring Recess

April 1 Beginning of Academic Year

April 4 Entrance Ceremony

April 6 ~ 7 Orientation for 1st Year Students

April 2 ~ 3 Orientation for Continuing Students

May 11 ~ 12 Exchange event with
Hamamatsu University School of Medicine

June 9 Interment Services for Body Donors

Aug. ~ Sep. Summer Recess

Oct.1 Foundation Day

Oct.25 Requiem Ceremony for Body Donors

Oct.26 ~ 29 Waka-ayu Festival
(University-wide student festival)

Dec. ~ Jan. 2013 Winter Recess



◀ Entrance Ceremony



▲ Sports Event with Hamamatsu University School of Medicine



▲ Awarding of Doctorates of Medical Science and Master Degrees of Nursing



▲ Waka-ayu Festival



▲ Graduation Ceremony

2013

Jan.19 ~ 20 Examination by the National Center
for University Entrance Examinations

Feb.25 ~ 26 Undergraduate entrance examination
(early schedule)

March 7 Awarding of Doctorate Degrees of
Medical Science and Master Degrees of Nursing

March 7 Graduation Ceremony

March 31 End of Academic Year





MEMBERS OF THE BOARD

Member of the Board

As of October 1, 2012

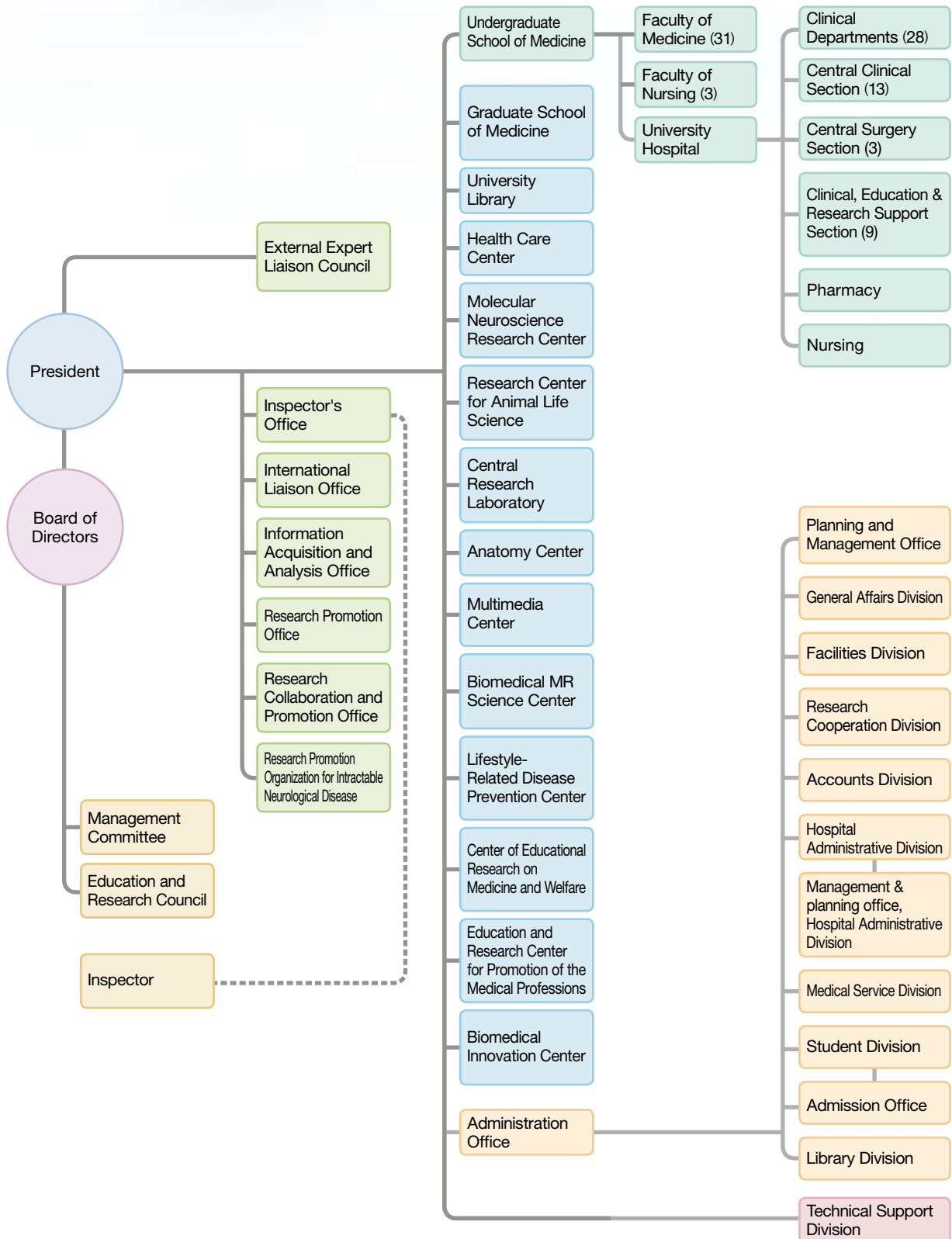
President	Director		Inspector	
Tadao Bamba	Academic Affairs, Vice President	Takanori Hattori	Toshikazu Araki	
	Medical Affairs, Vice President and Hospital Director	Atsunori Kashiwagi	Adjunct	Katsuhiro Umeyama
	Fiscal Affairs	Takanobu Takao		
	General Affairs	Shigemi Tanigawa		

Management Committee				Education and Research Council			
President	Tadao Bamba	Former President of Nagahama Institute Bio-Science and Technology	Yasutsugu Shimonishi	President	Tadao Bamba	Professors, Undergraduate School of Medicine	Takahide Kimura
Director	Takanori Hattori	Chairman of the Board, Ohmi Environment Conservation Foundation	Nobuo Chikaraishi	Director	Takanori Hattori		Tomio Okamura
	Atsunori Kashiwagi	Emeritus Professor, Kyoto Sangyo University	Masanori Nitta		Atsunori Kashiwagi		Naoto Yamada
	Takanobu Takao	Alumni Association Chairman Neurosurgery Department Chief, Kohka Public Hospital	Kazuyoshi Watanabe		Takanobu Takao		Yoshitaka Matsusue
	Shigemi Tanigawa				Shigemi Tanigawa		Hiromi Kuwata
Former Treasurer of Shiga Prefectural Government	Hironobu Ikeguchi			Curator, University Library	Kihachiro Horiike	Head of General Affairs Division	Ikuo Ohno
President of Sunrise Publishing	Junko Iwane			Chief, Faculty of Medicine	Yusaku Okada	Head of Student Division	Yasuhiko Yoshida
				Chief, Faculty of Nursing	Kaoru Takigawa		

External Expert Liaison Council

Director of Shiga Nursing Association	Mineko Ishibashi	Vice-President of the Shiga University of Medical Science Alumni Association and Occupational Health Consultant	Hitoshi Kaneko	Mayor of Kusatsu City	Wataru Hashikawa
Chairman of the Board, Foundation for Biomedical Research and Innovation	Hiroo Imura	President of Optex Co., Ltd.	Toru Kobayashi	Representative of NPO Nanohana Project Network	Ayako Fujii
Director of Shiga Medical Association	Yoshitaka Kasahara	Former President of the University of Shiga Prefecture	Naohiro Soga	Mayor of Otsu City	Naomi Koshi
Governor of Shiga Prefecture	Yukiko Kada	Former President of Biwako Broadcasting Co., Ltd.	Takashi Nishimura		

ORGANIZATION CHART



DEPARTMENTS

Undergraduate School of Medicine



As of October 1, 2012

Faculty of Medicine

31
departments

1 Basic Medical Science

8
departments

Fundamental Biosciences	Biochemistry and Molecular Biology
Culture and Medicine	Pathology
Anatomy	Pharmacology
Physiology	Social Medicine

2 Clinical Medicine

18
departments

Internal Medicine	Urology
Pediatrics	Ophthalmology
Psychiatry	Anesthesiology
Dermatology	Radiology
Surgery	Oral and Maxillofacial Surgery
Orthopaedic Surgery	Clinical Laboratory Medicine
Neurosurgery	Emergency and Intensive Care
Otorhinolaryngology-Head and Neck Surgery	Family Medicine
Obstetrics and Gynecology	Medical Oncology

3 Departments by Endowment

5
departments

Sleep Medicine	Comprehensive Surgery
Community Perinatal Medicine	Department of Community Psychiatric Medicine
Comprehensive Internal Medicine	

Faculty of Nursing

3
departments

Fundamental Nursing	Public Health Nursing
Clinical Nursing	

Graduate School of Medicine



As of October 1, 2012

Doctoral Program

5
majors

1 Biological Information Science

Minimally Invasive Medicine	Bio-Molecular Dynamics
Cell Information	Multi-Dimensional Image Analysis
Advanced Medical Specialist Training	

2 Integrated Medical Science

Neurological Regulation	Infectious Diseases and Immunological Regulation
Pathological Neuroscience	Endocrinological Regulation
Advanced Medical Specialist Training	

3 Regeneration and Tumor Science

Reproduction, Development and Regeneration	Genome Oncology
Stem Cell	Molecular Genetics
Tumor-Morphology Informatics	Oncology Specialist Training Course
Advanced Medical Specialist Training	

4 Translational Research Science

Disease and Organ Regulation	Artificial Organs and Bioengineering
Genetic Regulation Therapy	Advanced Pain Regulation
Advanced Medical Specialist Training	

5 Science of Lifestyle-Related Diseases

Lifestyle-Related Disease Epidemiology	Work-Related Diseases
Vascular Functional Regulation	Analytical Medical Genetics
Molecular Nutrition and Metabolic Regulation	
Advanced Medical Specialist Training	

Master Program

1
major

3
fields

1 Nursing

Fundamental Nursing	Family & Community Health Nursing
Clinical Nursing	



ADMINISTRATIVE AND ACADEMIC STAFF

Number of Staff Members

As of May 1, 2012

Classification	Members of the Board	Academic Staff						Administrative Staff	Technicians and Nurses	Grand Total
		Professors	Associate Professors (I)	Associate Professors (II)	Assistant Professors	Research Associates	Total			
Present Number	6 (1)	60 (2)	46 (1)	44	182 (1)	15	347 (4)	127	745	1225 (5)
Assignments of current staff	President	1								1
	Directors	4								4
	Inspectors	1 (1)								1 (1)
	Graduate School of Medicine		2				2			2
	Undergraduate School of Medicine		51 (1)	33 (1)	12	84	13	193 (2)	10	203 (2)
	University Hospital		2	8	31	90		131	706	837
	Health Administration Center				1			1	1	2
	Molecular Neuroscience Research Center		1 (1)	2		6 (1)		9 (2)		9 (2)
	Research Center for Animal Life Science		1	1			1	3	5	8
	Central Research Laboratory			1			1	2	6	8
	Multimedia Center					1		1		1
	Biomedical MR Science Center		1	1		1		3		3
	Lifestyle-Related Disease Prevention Center		1					1		1
	Biomedical Innovation Center		1					1		1
Administration Office								127	17	144

Note: () = number of part-time, excluded from the above number

Center Director, etc.

As of October 1, 2012

Adviser to the President (Industrial Relations) <small>(held concurrently)</small> Tohru Tani	Adviser to the President (Corporation Evaluation) Norihsa Murayama	Adviser to the President (Support for Female Researchers) <small>(held concurrently)</small> Mariko Omatsu-Kanbe	
University Library Curator <small>(held concurrently)</small> Kihachiro Horiike	Health Administration Center Director <small>(held concurrently)</small> Yoshihide Fujiyama	Molecular Neuroscience Research Center Director <small>(held concurrently)</small> Ikuo Tohyama	Research Center for Animal Life Science Director <small>(held concurrently)</small> Takanori Hattori
Center Research Laboratory Director <small>(held concurrently)</small> Tomio Okamura	Anatomy Center Director <small>(held concurrently)</small> Hiroyuki Sugihara	Multimedia Center Director <small>(held concurrently)</small> Kihachiro Horiike	Biomedical MR Science Center Director <small>(held concurrently)</small> Toshiro Inubushi
Lifestyle-Related Disease Prevention Center Director <small>(held concurrently)</small> Hiroshi Maegawa	Center for Educational Research on Medicine and Welfare Director <small>(held concurrently)</small> Kenichi Mitsunami	Education and Research Center for Promotion of the Medical Professions Director <small>(held concurrently)</small> Takanori Hattori	Biomedical Innovation Center Director <small>(held concurrently)</small> Tohru Tani

Academic Staff

As of October 1, 2012

Faculty of Medicine							
Chief (held concurrently)	Yusaku Okada	Orthopaedic Surgery	Professor	Yoshitaka Matsusue	Clinical Nursing	Professor	Aiko Hatano
Basic Medical Science		Neurosurgery	Professor	Kazuhiko Nozaki	Public Health	Professor	Hitoshi Yasuda
	Professor Fukuio Yoshida	Otorhinolaryngology+Head and Neck Surgery	Professor	Takeshi Shimizu	Nursing	Professor	Makie Kawabata
Fundamental Bioscience	Professor Takahide Kimura	Obstetrics and Gynecology	Professor	Takashi Murakami	Research Promotion Organization for Intractable Neurological Diseases		
	Professor Takako Hirata	Urology	Professor	Yusaku Okada	Molecular Neuroscience Research Center		
	Professor Masaru Komori	Ophthalmology	Professor	Masahito Ohji	Neurology Unit	Associate Professor	Masaki Nishimura
Culture and Medicine	Professor Yoshihito Muroji	Anesthesiology	Professor	Shuichi Nosaka	Unit for Neuropathology and Diagnostics	Professor	Ikuo Tohyama
	Professor Hidemi Taira	Radiology	Professor	Kiyoshi Murata		Special Contract Professor	Hiroyasu Taguchi
	Professor Reiko Aiura	Oral and Maxillofacial Surgery	Professor	Gaku Yamamoto	Unit for Neurobiology and Therapeutics	Associate Professor	Makoto Urushitani
Anatomy	Professor Jun Udagawa	Clinical Laboratory Medicine	Professor	Hidetoshi Okabe	Unit for Animal Models of Neurological Disorders	Guest Professor	Ryosuke Takahashi
	Professor Motoi Kudo	Emergency and Intensive Care	Professor	Yutaka Eguchi	Biomedical MR Science Center		
Physiology	Professor Seiji Hitoshi	Family Medicine	Professor	Kenichi Mitsunami	Project of Molecular and Cellular Biophysics	Professor	Toshiro Inubushi
	Professor Hiroshi Matsuura	Medical Oncology	Professor	Yataro Daigo	Biometric Application Project	Associate Professor	Akihiko Shiino
Biochemistry and Molecular Biology	Professor Kihachiro Horiike	Department by donations			Research Center for Animal Life Science		
	Professor Hisakazu Ogita		Special Contract Professor	Soichiro Miyazaki		Professor	Ryuzo Torii
	Professor Hiroshi Kimura	Sleep Medicine	Special Contract Professor	Masako Ohkawa		Guest Professor	Teruhiko Wakayama
Pathology	Professor Hiroyuki Sugihara	Community Perinatal Medicine	Special Contract Professor	Kentaro Takahashi	Central Research Laboratory		
	Professor Kazumasa Ogasawara	Comprehensive Internal Medicine	Professor	Tomoyuki Tsujikawa		Associate Professor	Takahiro Isono
	Professor Bin Gotoh	Comprehensive Surgery	Professor	Yoshimasa Kurumi	Life style-Related Disease Prevention Center		
Pharmacology	Professor Tomio Okamura	Community Psychiatric Medicine	Professor (held concurrently)	Naoto Yamada		Special Contract Professor	Hirotsugu Ueshima
	Professor Katsuyuki Miura	Faculty of Nursing			Biomedical Innovation Center		
Social Medicine	Professor Katsuji Nishi	Chief (held concurrently)		Kaoru Takigawa	Graduate School of Medicine		
	Clinical Medicine				Doctoral Program		
Internal Medicine	Professor Minoru Horie		Professor	Shigehiro Morikawa	Integrated Medical Science Infectious Diseases and Immunological Regulation (Mucosal Immunology and Gastroenterology)		
	Professor Yoshihide Fujiyama	Fundamental Nursing	Professor	Miyuki Adachi	Professor	Akira Andoh	
	Professor Hiroshi Maegawa		Professor	Keiko Kato	Master Program		
Pediatrics	Professor Yoshihiro Takeuchi		Professor	Kaoru Takigawa	Research in Basic Nursing/Advanced Professional Training Course (Nursing Administration Practices)		
Psychiatry	Professor Naoto Yamada		Professor	Naomi Miyamatsu	Professor (held concurrently)	Mitsuko Fujino	
Dermatology	Professor Toshihiro Tanaka	Clinical Nursing	Professor	Yoshihiro Endo			
Surgery	Professor Tohru Tani		Professor	Hiroko Watanabe			
	Professor Tohru Asai		Professor	Hiroki Kuwata			

OUTLINE OF ACTIVITIES

Educational Activities

Undergraduate Education

- **Setting goals for national examination pass rates for medical and nursing students**
Shiga University of Medical Science is aiming for its students to achieve a pass rate of 95% or more on the National Examination for medical practitioners, 98% or more on the National Examination for nursing practitioners, and 95% or more on the National Examination for public health nursing practitioners.
- **Implementing hands-on training in comprehensive medicine for all students**
Based on the success of education projects such as training for patient visits, the university has established hands-on training in comprehensive medicine for all students and is working to develop the abilities of students to communicate and think logically.
- **Medical student support program through local "foster parents"**
With the goal of training doctors and nurses who will be in charge of future local medical services, Shiga University of Medical Science has established an advising system for students in which people including graduates are assigned as "foster parents" and local residents as "semi-foster parents" to students from when they first enter the university.
- **Program to foster basic medicine professionals**
With the aid of the Japanese Ministry of Education, Culture, Sports, Science and Technology, Shiga University of Medical Science supports academically and financially students who want to be basic medicine teachers/researchers during their studies in undergraduate and graduate school.



Graduate Education

- **Basic plan to train cancer professionals**
Shiga University of Medical Science trains cancer specialists in the fields of drug therapy, radiation therapy, palliative therapy and breast cancer therapy.
- **Advanced specialization training**
The university has created an Advanced Specialist Training Program for all study courses and aims for the students to obtain doctorates, becoming specialist doctors.



Promotion of Priority Research Projects

- **Establishment of Disease Models and Medical Research using Macaques**
 - Establishment of Alzheimer's disease model
 - Production of iPS cells and transplantation study using MHC-homo macaques
 - Research on pathogenesis of new influenza and testing of efficacy of several vaccines and anti-viral drugs
 - Study on cornea transplantation
- **Research on Intractable Neurological Diseases**
 - Development of novel diagnostic and therapeutic methods for Alzheimer's disease
 - Development of novel immunotherapy targeting pathogenic proteins of ALS
- **Promotion of Cancer Treatment**
 - Development of new cancer diagnostics using biomarkers, and to carry out the peptide vaccine treatment
 - Gastroenterological cancer treatments based on the anti-cancer drug sensitivity test
- **Research on Lifestyle-related Diseases**
 - International cooperative studies and population-based studies on atherosclerosis, hypertension, diabetes and obesity, etc., and to establish the epidemiology research center
 - Identification of gene locus susceptible to Type 2 diabetes and its complications
 - Search for biomarkers of diabetic nephropathy and visceral obesity
- **MR Medicine and Molecular Imaging**
 - Development of molecular imaging probes
 - Production of MR-compatible surgical manipulators



Research Activities



NUMBER OF STUDENTS

Undergraduate Students

As of May 1, 2012

Faculty	Students	Total	Target number per year	Number of graduates
Faculty of Medicine	Male	407	100	2,251
	Female	241		849
	Subtotal	648		3,100
Transferred graduated students in the 2nd semester of the 2nd year	Male	40	17	
	Female	28		
Faculty of Nursing	Male	13	60	36
	Female	246		999
	Subtotal	259		1,035
Transferred students in the 3rd year	Male	2	10	
	Female	18		
Total		907	160	4,135

Graduate Students

As of May 1, 2012

Courses	Present numbers						Target number per year	Total target number		
	Students	1st	2nd	3rd	4th	Total				
Doctor Program	Biological Information Science	Male	0	0	0	1	1	6	24	
		Female	1	0	2	2	5			
	Integrated Medical Science	Male	5	4	5	5	19	7	28	
		Female	1	5	3	2	11			
	Regeneration and Tumor Science	Male	4	2	0	4	10	5	20	
		Female	2	2	1	3	8			
	Translational Research Science	Male	10	8	15	15	48	7	28	
		Female	2	4	4	5	15			
	Science of Lifestyle-Related Diseases	Male	5	2	2	2	11	5	20	
		Female	1	3	1	3	8			
	Subtotal			31	30	33	42	136	30	120
	Master Program	Nursing	Male	3	6	—	—	9	16	32
			Female	14	20	—	—	34		
		Subtotal			17	26	—	—	43	16
Total			48	56	33	42	179	46	152	

INTERNATIONAL ACADEMIC EXCHANGES

Since it was founded in 1974, Shiga University of Medical Science (SUMS) has actively promoted international academic exchanges. The goal of these exchanges is to foster the talents of students pursuing careers in medicine and the efforts of those engaged in medical research and education. Academic exchange agreements have been concluded with several major universities around the world. To date, SUMS has welcomed many students and scholars from overseas through these programs. In the past 10 years, SUMS has accepted about 130 guest researchers, and about 20 researchers entered the graduate school and earned the Doctor in Medicine Degree. There are currently 15 graduate students, and 7 scholars working in their respective fields at the university, representing the countries of China, Vietnam, Bangladesh, Egypt, Bulgaria, Canada, Malaysia and France. In addition, the number of university staff and faculty members dispatched abroad to attend international conferences or to work with their overseas counterparts has been increasing yearly.

Since 2003, SUMS has been providing a curriculum of voluntary study for 4th year students to study abroad, and nearly 30 students go to universities, research institutes and hospitals worldwide every year.

To help to meet the housing needs of the growing number of visiting students and scholars, SUMS constructed an International House, which was completed in 1994. The building is a three-story residence offering a broad range of amenities in a convenient location at the edge of campus. Any registered students or scholars from overseas, along with their spouses and children, are qualified to reside at the International House.

Academic exchange agreements and International House accommodations are helping to keep SUMS at the forefront of international cooperation and learning in all medical fields.



International House



International House

Type	Area	Number
Single Room	16 m ²	16
Double Room	40 m ²	5
Family Room	60 m ²	3



Universities with Cooperative Agreements

Institution	Country	Date Agreed
Beihua University	China	1984.11.24
Changchun Municipal Hospital	China	1984.11.24
The University of British Columbia	Canada	1990. 7.26
University of Michigan	USA	1990.11.29
China Medical University	China	1993. 9.28
Rome University "La Sapienza"	Italy	1994.10.28
The University of Picardie Jules Verne	France	1995. 5.16
Harbin Medical University	China	2001.11.21
University Hospital of Amiens-Picardie	France	2004.10. 4
Cho Ray Hospital	Vietnam	2006.12.25
University of Medicine and Pharmacy at Ho Chi Minh City	Vietnam	2008. 6.23
The Japan Center for Michigan Universities	USA	2008.11.19
Northeastern University	China	2009. 5. 1
University of Ottawa	Canada	2010. 2.16
The National University of Malaysia	Malaysia	2011.11.10
The University of Nairobi	Kenya	2012.11. 7
Kenya Medical Research Institute	Kenya	2012.11. 7

Foreign Students and Foreign Guest Researchers (2002 ~ 2011)

Country	Total
Australia	1
Bangladesh	17
Belarus	4
Bulgaria	6
Canada	2
China	97
Denmark	1
Egypt	16
France	6
Germany	1
Hungary	4
India	5
Indonesia	1
Kenya	2
Korea	1
Madagascar	1
Malaysia	1
Mongolia	6
Pakistan	2
Serbia	3
Taiwan	8
USA	1
VietNam	37
Total	223



Signing Ceremony with The University of Nairobi and Kenya Medical Research Institute



Foreign Students Excursion



Social Event with International Students



Library and Multimedia Collaboration Center



University Library



University Library

Library Holdings

As of March 31, 2012

Section	Books			Number of Journals (titles)		
	Japanese	Foreign	Total	Japanese	Foreign	Total
Medicine	60,306	75,247	135,553	899	1,401	2,300
General Education	22,125	6,403	28,528	62	32	94

Use of the Library

As of March 31, 2012

Items		Numbers
Items Borrowed	Books	10,918
	Journals	820
Copying of Documents	Received	4,082
	Requested	2,202
Audiovisual Facilities Used		89





Established April 1, 1978
 Opened October 1, 1978
 Beds 614
 Building Land Area 17,789m²
 Total Floor Space 60,497m²

Philosophy

Holistic Medicine Aiming to Achieve Confidence and Satisfaction

Basic Policies

- Provide patient-oriented medical care
- Aim for providing confidence, relief and satisfaction
- Provide highly-advanced medical care with kind hospitality
- Aim for a community-based university hospital
- Educate medical professionals to excel at a global level
- Aim for sound hospital management

Clinical Activities

Training of Highly Qualified Medical Professionals

- **Attracting more resident-physicians in the Shiga area through various effective and systematic training programs**
 The Clinical Medical Education Center provides complete training programs for residents as well as professionals.
- **Educating specialized medical professionals**
 Training professionals on medical innovations through the “Core Life-long Advanced Specialist Training Program”
- **Promoting specialized qualifications for co-medical staff and training programs for outside co-medical staff**
 Promoted by a new evaluation system for such qualifications

Providing Highly Qualified Medical Treatment

- **Promoting advanced, specialized cardiovascular medical and surgical treatment**
 - Providing advanced interventional treatment for patients with coronary artery disease and up-to-date medical care for those with serious arrhythmia
 - Providing advanced and specialized cardiovascular surgery such as off-pump coronary artery bypass grafting
- **Promoting advanced cancer treatment**
 - Providing various and unique options for advanced cancer treatment such as permanent prostate brachytherapy, vaccine therapy with cancer peptides or dendritic cells, and hyperthermia, as the region’s central hospital for advanced cancer treatment
 - Supporting the activities of the cancer salon “Yurari” and the cancer board
- **Promoting physician-initiated clinical trials for advanced medicine— Center for Clinical Research and Advanced Medicine**
- **Promoting team-based medical care in such area as nutrition support team, infection control team, palliative medicine, and bedsores and stoma care**

Contributing to Local Medical Care

- **Promoting local medical care in the Higashi-Ohmi area through the re-activation plan for regional medical care**
- **Promoting various regional co-operative systems through the activities of the Patient Support Center and the obstetric open-bed system**
- **Promoting standardization of cancer treatment as the regional central hospital in the Higashi-Ohmi area**
- **Contributing to local medical care by strengthening the perinatal care and emergency medical care systems**

HOSPITAL RENEWAL



New Ward D



Pediatric Ward



Rest Space



Roof-top Garden



Consultation Room

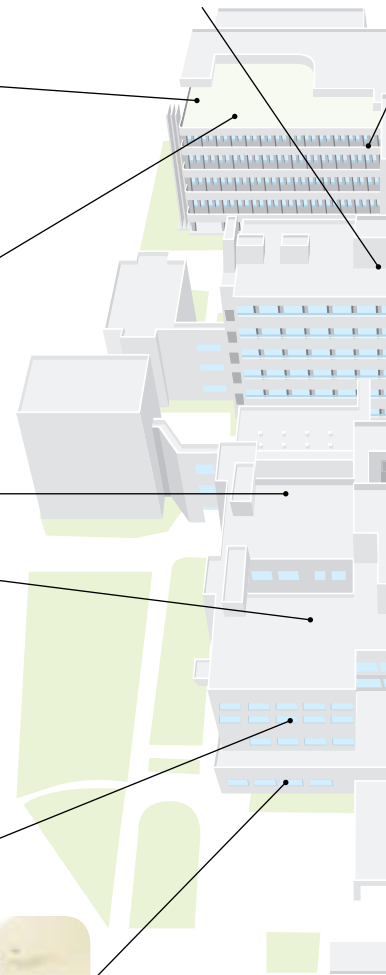


Reception



Coffee Shop

The University Hospital
completed its renewal in
March, 2012.





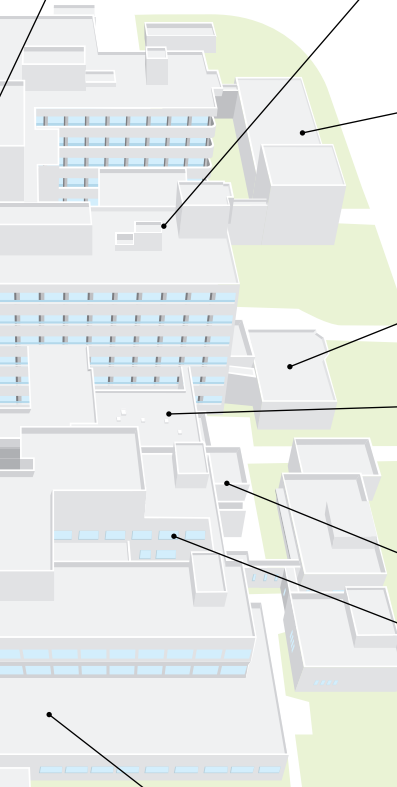
Sickroom



Clinical Skills Laboratories



Surgical Room



LINAC



Waiting Area



Library for Patients



Entrance Hall

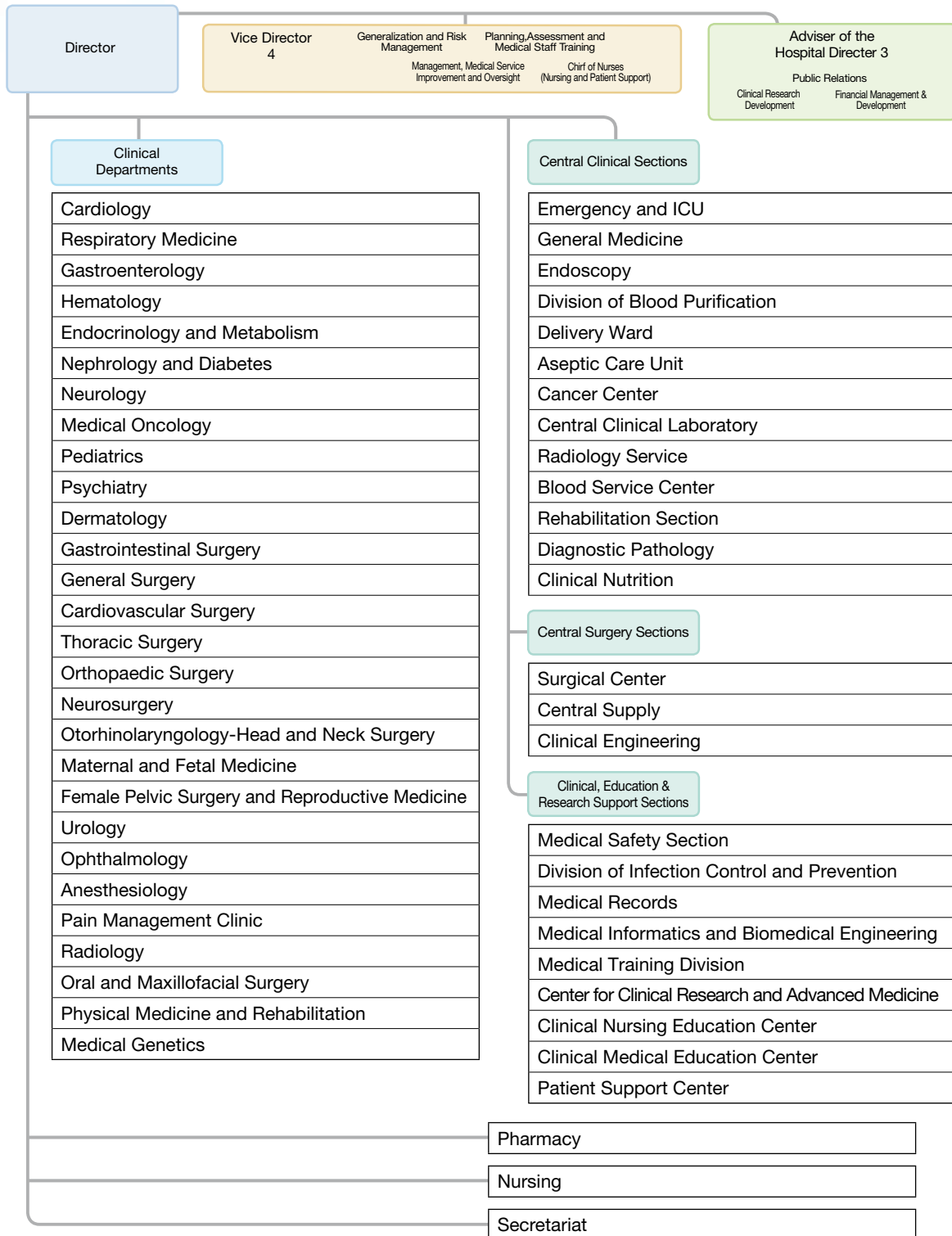


Convenience Store



UNIVERSITY HOSPITAL ORGANIZATION CHART

Organization Chart



● DIAGNOSIS AND TREATMENT

As a regional core hospital, the university hospital has striven to provide high quality medicine and to train specialized medical personnel. In addition to raising the quality of patient services, our hospital has renewed its Quality Health Care Evaluation (Ver. 5) conducted by the Japan Council for Quality Health Care.

Providing Patients with Advanced Medicine

● Providing advanced medical technology

Advanced medical technology refers to the technology that the Ministry of Health, Labour and Welfare has approved as the most advanced. This approval is granted only for the medical facilities that possess well-trained staff and up-to-date facilities and equipment. The following three technologies are available at our hospital (as of Nov. 1, 2012).

1 Tumor antigen-derived peptides-pulsed dendritic cell-based vaccine immunotherapy

Dendritic cells that induce killer lymphocytes against cancer cells are cultured and then injected into the patient. At our hospital, this treatment is applied for patients with lung cancer and breast cancer.



2 Laparoscopic Sleeve gastrectomy

Laparoscopic Sleeve Gastrectomy (LSG), removing most of the stomach and shaping the remaining stomach into a tube or “sleeve,” is a minimally invasive surgery for the patient with morbid obesity. LSG is also known to resolve metabolic syndrome including type 2 diabetes, hypertension and hyperlipidemia.



3 Adjuvant Chemotherapy Trial of S-1 for breast cancer with ER-positive and HER2-negative

A randomized, controlled study to determine whether S-1 combined with standard postoperative endocrine therapy more effectively inhibits recurrence than standard postoperative endocrine therapy alone in patients with estrogen receptor (ER)-positive, HER2-negative primary breast cancer.



SITE MAP OF FACILITIES



Number	Name of Building	Number	Name of Building
1	General Education and Research Building	16	Energy Center
2	Basic Medicine Education and Research Building	17	Nurses' Housing
3	Basic Medicine Laboratories and Lecture Halls	18	Incinerator Facilities
4	School of Nursing Building	19	Waste Treatment Facilities
5	Student Center	20	Waste Water Treatment Facilities
6	Central Research Laboratory	21	Martial Arts Gymnasium
7	Molecular Neuroscience Research Center	22	Guest House
8	Clinical Medicine Education and Research Building	23	International House
9	Central Radioisotope (RI) Research Laboratory	24	Swimming Pool
10	Research Center for Animal Life Science	25	Music Hall
11	Clinical Lecture Halls	26	Nuclear Magnetic Resonance (NMR) Center
12	Administration Building	27	Others
13	Collaboration Center	28	Biomedical Innovation Center
14	University Hospital	29	Nursery Center
15	Gymnasium	30	Creative Motivation Center



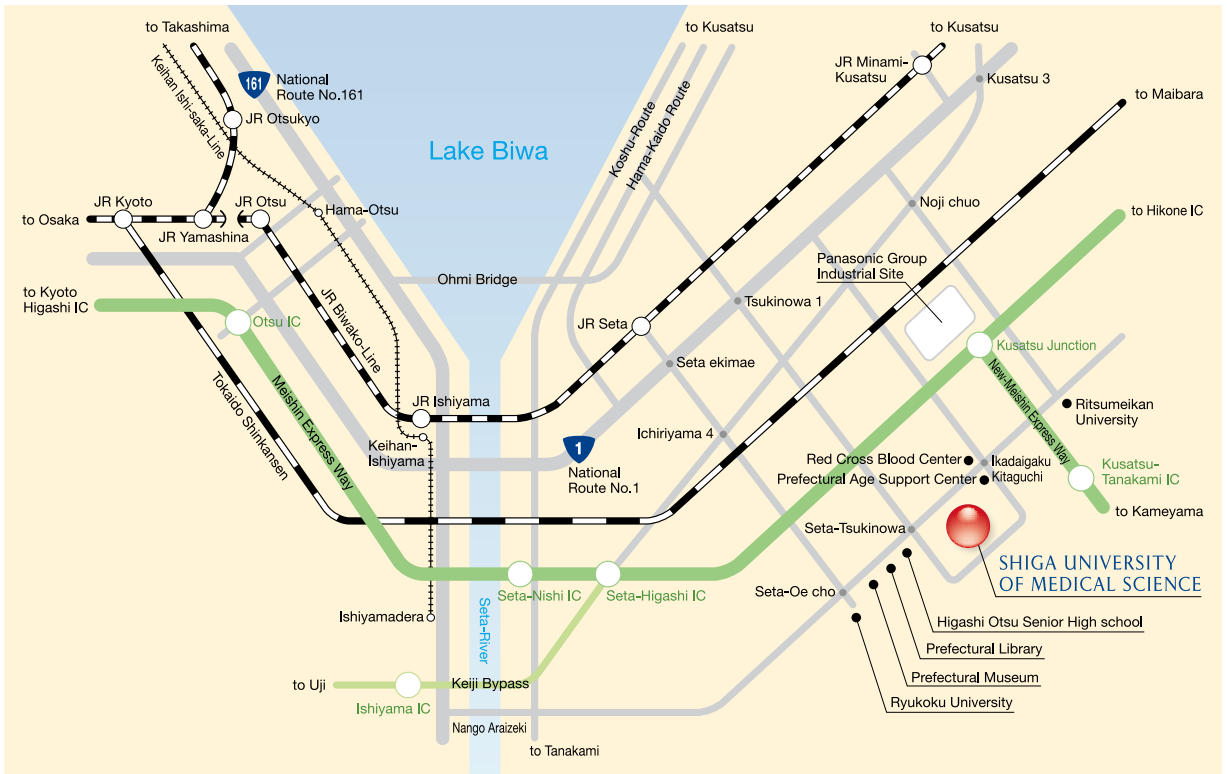
AREA MAP AND ACCESS



Shiga University of Medical Science



Names		Address
Administration Office	University Library	Seta Tsukinowa-cho, Otsu City, Shiga 520-2192
School of Medicine	International House	
University Hospital		
Nurses' Housing		7-17 Kasayama 7-Chome, Kusatsu City, Shiga 525-0056



SITE MAP OF FACILITIES · AREA MAP AND ACCESS



● The Emblem of Shiga University of Medical Science

This mark shows a combined image of “Ripples of Lake Biwa in Shiga” and “Wave motions of warmhearted light.” “Ripples” that move from the outside to the center indicate people's hopes for medical care.



SHIGA UNIVERSITY
OF MEDICAL SCIENCE

Published February 2013
Edited by Planning and Management Office, Shiga University of Medical Science